



# SAMAKANDA

Princess: 25.20m (82'8"), 2014, 8 Guests

All Yachts Worldwide



All Yachts Worldwide



All Yachts Worldwide



All Yachts Worldwide

Forward sunbathing area





Breakfast on flybridge





Retractable top



Aft Dining



All Yachts Worldwide

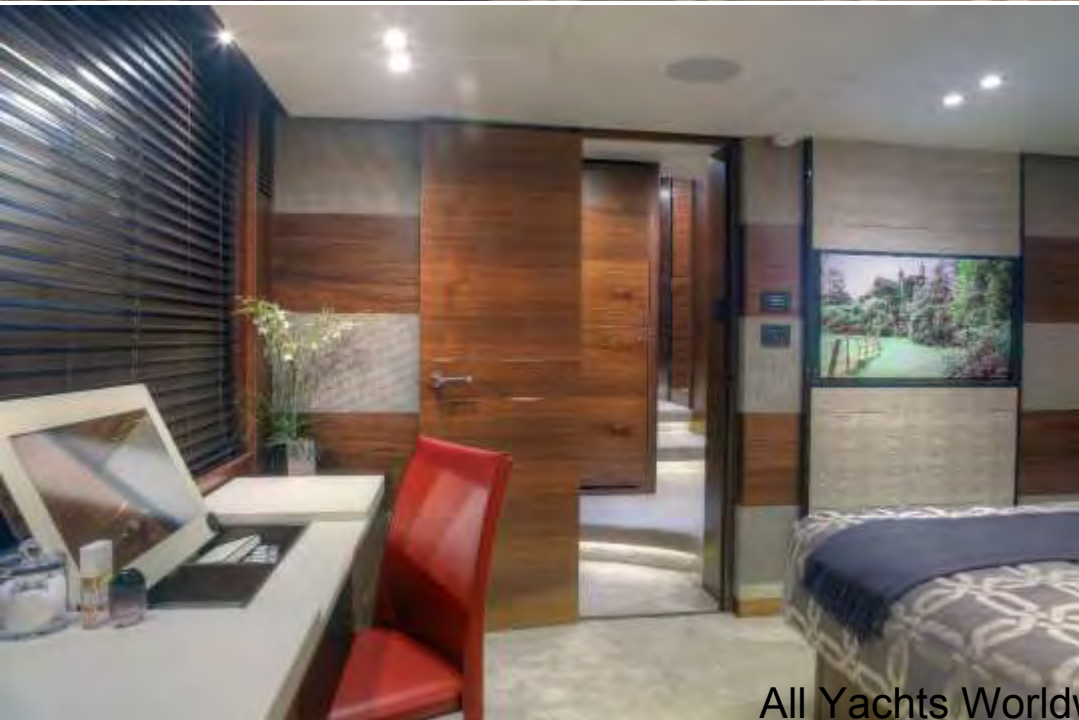


Saloon seating area



Dining area









Double Cabin





# Convertible Twin Cabin

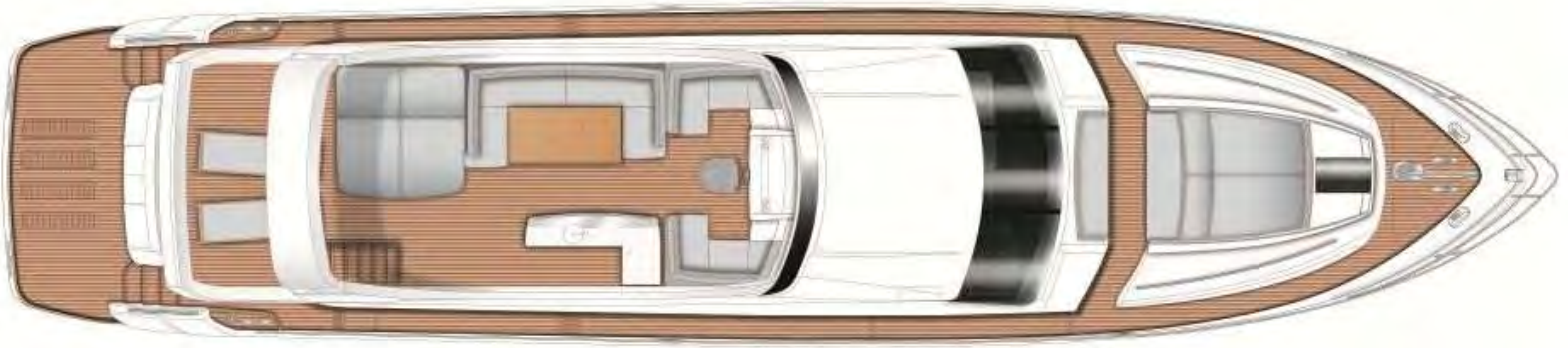


Spa Jacuzzi on flybridge



All Yachts Worldwide

# LAYOUT



All Yachts Worldwide

## SPECIFICATIONS

Length: 25.20m (82' 8")

Beam: 5.74m (18' 10")

Draft: 1.75m (5' 9")

Year Built: 2014

Builder: Princess

Flag: British

Port of Registry: London

Cruising Speed: 25 knots

Max Speed: 30 knots

## ACCOMMODATION

Number of Cabins: 4

Cabin Configuration: 3 Double  
1 Twin (Convertible)

Total Guests (Sleeping): 8

Total Guests (Cruising): 12

Total Crew: 3

## TENDERS, TOYS & EQUIPMENT

- Novarania DL400 tender with a 50hp outboard

- 1 x 2-person kayak

- 1 x single kayak

- 1 x 3-person donut "sofa"

- 1 x single donut

- Wakeboards

- Waterskis

- Snorkeling gear

*All specifications & images are given in good faith and offered for informational purposes only. The publisher and company does not warrant or assume any legal liability or responsibility for the accuracy, completeness, or usefulness of any information and/or images displayed. Yacht inventory, specifications and charter prices are subject to change without prior notice. None of the text and/or images used in this brochure maybe reproduced without written consent from the publisher.*